

World Class Printing Systems for Real World Applications

HI-RES PRINTING SYSTEMS

COPILOT
COPILOT 128
COPILOT 256
COPILOT 500 TURBO
COPILOT MAX TURBO
COPILOT MAX 512i TURBO

THERMAL INK JET PRINTING SYSTEM

VIPER

PRINT VALIDATION SYSTEM

SQUIDCHECK

CODING & MARKING SOFTWARE

ORION CODING & MARKING SOFTWARE
SIRIUS CODING & MARKING SOFTWARE

DOD LARGE CHARACTER PRINTING SYSTEMS

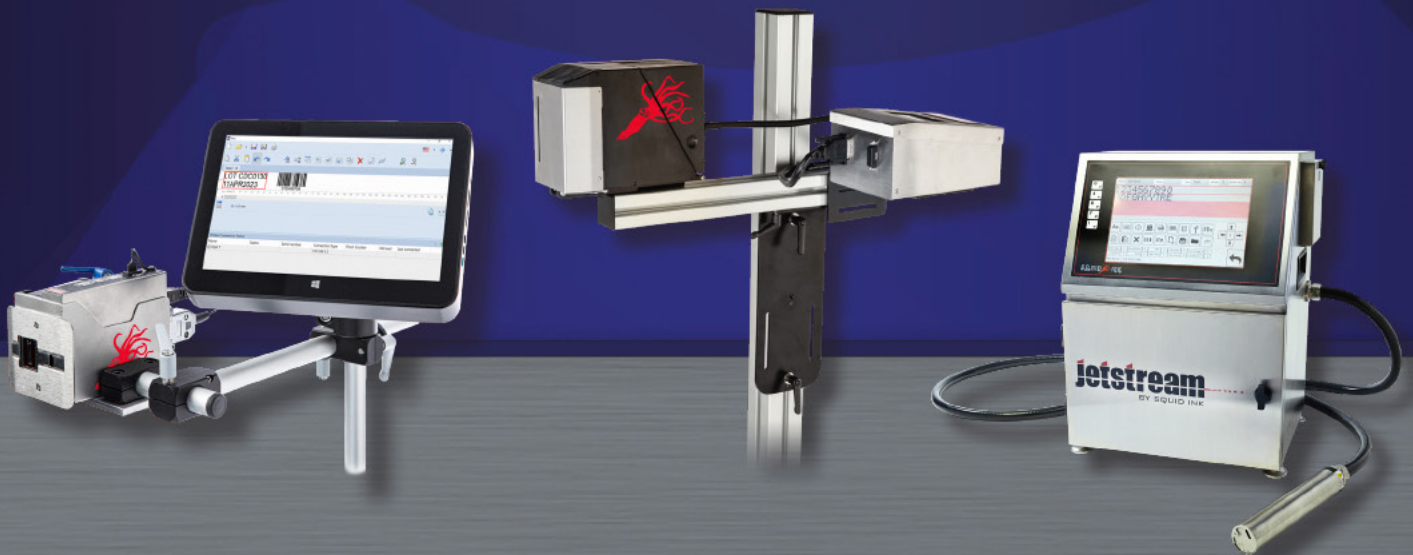
SQ/2
SQ/2 SCORPION
VECTOR XII

PRIMARY PRODUCT MARKING

JETSTREAM
JETSTREAM SONIC
STREAMLINE 5
SQ-LASER
UV LED CURING

INK JET FLUIDS & PRODUCT/CASE HANDLING

REPLACEMENT INKS & FLUIDS
VERTICAL CASE TRANSPORT SYSTEM
VARIABLE SPEED CONVEYORS
BOTTOMLESS SIDE BELT TRANSFER CONVEYOR
STAINLESS STEEL INLINE CONVEYOR



HI-RES PRINTING SYSTEMS

CO Pilot



FEATURE-RICH SYSTEM AT AN ENTRY LEVEL PRICE

The CoPilot offers several advantages over competitive systems. Users can expect 30% larger print, increased throw distance and approximately 5 times larger ink volume.



| SYSTEM SPECIFICATIONS | |
|-------------------------|------------------------------------------------|
| Printhead Technology | Piezo impulse printhead technology |
| Max Print Height | 0.7" (1.8cm) per printhead |
| Print Resolution | Up to 205 dpi (graphics, text, bar codes) |
| Print Speed | Up to 135 ft/min. (41m/min.) @ 205 dpi |
| Ink Volume | 200ml cartridge |
| Substrate Capabilities | Porous or non-porous surfaces |
| SOFTWARE SPECIFICATIONS | |
| Time & Date | Full time & date, expiration & Julian |
| Shift Codes | 4 programmable codes w/auto rollover |
| Bar Codes | All standard bar codes including 2D |
| Logos | Most files supported by Orion Software |
| Printing Features | Reverse, invert, rotate, repeat, on/off button |

CO Pilot 500 TURBO



MORE OPTIONS, BETTER PRINT

The CoPilot 500 Turbo is designed to print superior quality hi-resolution with up to 2.8" of print height per printhead and the ability to run up to 2 printheads from one controller.



| SYSTEM SPECIFICATIONS | |
|-------------------------|------------------------------------------------|
| Printhead Technology | Piezo impulse printhead technology |
| Max Print Height | 2.8" (7.1cm) per printhead, 5.6" total |
| Print Resolution | Up to 180 dpi (graphics, text, bar codes) |
| Print Speed | Up to 205 ft/min (300 ft/min HS Model) |
| Ink Volume | 500ml cartridge or bag |
| Substrate Capabilities | Porous or non-porous surfaces |
| SOFTWARE SPECIFICATIONS | |
| Time & Date | Full time & date, expiration & Julian |
| Shift Codes | 4 programmable codes w/auto rollover |
| Bar Codes | All standard bar codes including 2D |
| Logos | Most files supported by Orion Software |
| Printing Features | Reverse, invert, rotate, repeat, on/off button |

CO Pilot 128



DURABILITY, VERSATILITY & PRODUCTIVITY

Whether you are printing lot codes on coated cartons, bar codes on corrugate cases, or product information and logos on PVC pipe, you're sure to find the right solution with Squid Ink's CoPilot 128.



| SYSTEM SPECIFICATIONS | |
|-------------------------|------------------------------------------------|
| Printhead Technology | Piezo impulse printhead technology |
| Max Print Height | 0.7" (1.8cm) per printhead |
| Print Resolution | Up to 205 dpi (graphics, text, bar codes) |
| Print Speed | Up to 135 ft/min. (41m/min.) @ 205 dpi |
| Ink Volume | 500ml cartridge or bag |
| Substrate Capabilities | Porous or non-porous surfaces |
| SOFTWARE SPECIFICATIONS | |
| Time & Date | Full time & date, expiration & Julian |
| Shift Codes | 4 programmable codes w/auto rollover |
| Bar Codes | All standard bar codes including 2D |
| Logos | Most files supported by Orion Software |
| Printing Features | Reverse, invert, rotate, repeat, on/off button |

CO Pilot MAX 512i TURBO



MAKE YOUR MARK

CoPilot Max 512i Turbo offers 180dpi of razor-sharp graphics, small character text, and scannable barcodes at up to 2.8" of print height per printhead. With print speeds of up to 400 ft/min, users can maximize their production while delivering great-looking products.



| SYSTEM SPECIFICATIONS | |
|-------------------------|------------------------------------------------|
| Printhead Technology | Piezo impulse printhead technology |
| Max Print Height | 2.8" (7.1cm) per printhead, 5.6" total |
| Print Resolution | Up to 180 dpi (graphics, text, bar codes) |
| Print Speed | Up to 400 ft/min at 180 dpi |
| Message Length | Up to 120" (3.05 m) |
| Ink Volume | 500ml cartridge |
| Substrate Capabilities | Porous or non-porous surfaces |
| SOFTWARE SPECIFICATIONS | |
| Time & Date | Full time & date, expiration & Julian |
| Shift Codes | 4 programmable codes w/auto rollover |
| Bar Codes | All standard bar codes including 2D |
| Logos | Most files supported by Orion Software |
| Printing Features | Reverse, invert, rotate, repeat, on/off button |

CO Pilot 256



RUGGED DESIGN & LOW MAINTENANCE OPERATION

With up to 1.4" of print height per head (2.8" total) and the ability to print on both sides of the substrate in a single pass, the CoPilot 256 is designed to work as an integral part of your day-to-day packaging operation.



| SYSTEM SPECIFICATIONS | |
|-------------------------|------------------------------------------------|
| Printhead Technology | Piezo impulse printhead technology |
| Max Print Height | 1.4" (3.6cm) per printhead, 2.8" total |
| Print Resolution | Up to 205 dpi (graphics, text, bar codes) |
| Print Speed | Up to 135 ft/min. (41m/min.) @ 205 dpi |
| Ink Volume | 500ml cartridge or bag |
| Substrate Capabilities | Porous or non-porous surfaces |
| SOFTWARE SPECIFICATIONS | |
| Time & Date | Full time & date, expiration & Julian |
| Shift Codes | 4 programmable codes w/auto rollover |
| Bar Codes | All standard bar codes including 2D |
| Logos | Most files supported by Orion Software |
| Printing Features | Reverse, invert, rotate, repeat, on/off button |

CO Pilot MAX TURBO



BIGGER PRINT, BETTER PRINT

CoPilot Max Turbo utilizes Squid Ink's revolutionary 500ml active ink system, allowing users the ability to tilt or rotate the printhead in any direction without making height adjustments to the ink supply. The system prints 2.8" of hi-resolution characters, razor-sharp text, scannable bar codes, and great-looking logos at up to 360 dpi, nearly twice the resolution of competitive printers in its class.

| SYSTEM SPECIFICATIONS | |
|-------------------------|----------------------------------------------------------|
| Printhead Technology | Piezo impulse printhead technology |
| Max Print Height | 2.8" (7.1cm) per printhead, 5.6" total |
| Print Resolution | Up to 360 dpi (graphics, text, bar codes) |
| Print Speed | Up to 220 ft/min at 150 dpi; up to 110 ft/min at 300 dpi |
| Ink Volume | 500ml cartridge |
| Substrate Capabilities | Porous or non-porous surfaces |
| SOFTWARE SPECIFICATIONS | |
| Time & Date | Full time & date, expiration & Julian |
| Shift Codes | 4 programmable codes w/auto rollover |
| Bar Codes | All standard bar codes including 2D |
| Logos | Most files supported by Orion Software |
| Printing Features | Reverse, invert, rotate, repeat, on/off button |



DOD LARGE CHARACTER PRINTING SYSTEMS

SQ/2



SIMPLE DAY - TO - DAY OPERATION

SQ/2 Ink jet printing system allows manufacturers to print high quality dot-matrix characters on a variety of products at a cost-effective price.

| SYSTEM SPECIFICATIONS | |
|-----------------------|------------------------------------------------------------------------------------------------------|
| Character Height | 0.75" (1.9cm) 0.50" (1.3cm) 0.375" (1.0cm) |
| Print Speed | 20 ft/min (6.1m/min) up to 200 ft/min |
| Message Length | 60 characters per message |
| Number of Messages | 64 memory locations |
| Software Features | Clock, Julian date, counter, lot counter |
| Operating Features | Dot size, print delay, character width, photocell on/off, invert print, reverse print, purge routine |
| Ink Volume | 0.5 gallon bottle or 5 gallon pail |

VECTOR XII



MODULAR PRINTING SYSTEM

Vector XII users have the option of choosing from several different printhead combinations. Two different printhead sizes are available: 1" or 1-3/4" character height. Each printhead is capable of printing at 100%, 40%, or 26% character height, offering six print sizes ranging from 1/2" to 1-3/4".

| SYSTEM SPECIFICATIONS | |
|-----------------------------------------------------|------------------------------------------------------------------------------------------------------|
| Character Height (16-channel Dot Matrix Characters) | 0.75" (1.9cm) 0.50" (1.3cm) 0.375" (1.0cm) |
| Character Height (32-channel hi-def characters) | 1.75" (4.45cm) |
| Print Speed | 20 ft/minute (6.1m/min) to 300 ft/min |
| Message Length | 128 characters per message |
| Number of Messages | 128 memory locations |
| Software Features | Clock, Julian date, counter, lot counter |
| Operating Features | Dot size, print delay, character width, photocell on/off, invert print, reverse print, purge routine |
| Ink Volume | 5 gallon pail |

SQ/2 Scorpion



MORE OPTIONS TO MAKE YOUR MARK

SQ/2 Scorpion users have the option of choosing from several printhead configurations. Five different print sizes are available: 3/8", 1/2", 3/4", 1" or 1-3/4" character height. All printheads are capable of printing at 100% or 70% character height, offering 12 print sizes.

| SYSTEM SPECIFICATIONS | |
|-----------------------------------------------------|------------------------------------------------------------------------------------------------------|
| Character Height (7-Channel Dot Matrix Characters) | 0.75" (1.9cm) in 7x5 matrix 0.50" (1.3cm) in 7 x 5 matrix 0.375" (1.0cm) in 7 x 5 matrix |
| Character Height (16-Channel Dot Matrix Characters) | 1.75" (4.5cm) 1.0" (2.5cm) |
| Print Speed | 20 ft/min (6.1m/min) up to 200 ft/min |
| Message Length | 128 characters per message |
| Number of Messages | 128 memory locations |
| Software Features | Clock, Julian date, counter, lot counter |
| Operating Features | Dot size, print delay, character width, photocell on/off, invert print, reverse print, purge routine |
| Ink Volume | 0.5 gallon bottle or 5 gallon pail |

PRINT VALIDATION SYSTEM

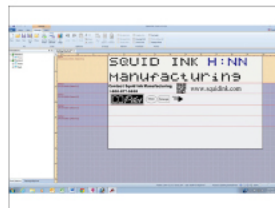


PRINT VALIDATION SYSTEM

SquidCheck™ offers print and validation of the bar codes printed on your cases, trays, pipe, or other products. SquidCheck utilizes bar code readers from Cognex®, the world's most trusted machine vision and industrial bar code reading company. The reader is integrated with a Squid Ink printer and SquidCheck Interface to ensure that codes are present, scannable, and accurate.

| SYSTEM SPECIFICATIONS | |
|----------------------------------------|--------------------------------------------------------------|
| Bar Codes | All standard including 2D |
| Image Resolution | 1280 x 960 global shutter |
| Image Sensor | 1/3" CMOS |
| Acquisition | 10 fps |
| Power Requirements | 100 - 240 VAC, 50/60 Hz |
| Communication | USB input to Squid Check I/O, ethernet to reader |
| Reader Dimensions Straight Position | 1.7" L x .9" W x 2.5" H (43.1mm L x 22.4mm W x 64.0mm H) |
| Reader Dimensions Right-Angle Position | 1.7" L x 1.4" W x 2.0" H (43.1mm L x 35.8mm W x 49.3mm H) |
| SquidCheck I/O Dimensions | 4.0" L x 3.0" W x 1.875" H (102mm L x 76mm W x 48mm H) |

CODING & MARKING SOFTWARE



MODERN DAY MESSAGE CREATION

The Orion Graphical Package allows users to easily connect to Squid Ink industrial printers and create and edit message files from a Windows® PC. The WYSIWYG message creation platform provides the functionality and versatility that today's applications require.



| SOFTWARE REQUIREMENTS | |
|--------------------------|---------------------------------------------|
| Operating System | Windows® XP Service Pack 3 (SP3) |
| Processor | Pentium® II, 1 GHz (or higher) |
| Memory | 512 MB |
| Hard Disk Space | 50 MB |
| Video | 4 MB, Windows® XP compatible SVGA |
| Resolution | 800 x 600 |
| Color Depth | 16-Bit recommended |
| Ethernet Port | IEEE 802.3 10BASE-T, 10 Mbps min, RJ-45 |
| Firewall / Printer Ports | 21 (FTP), 4000 (TCP/IP), 46810, (Multicast) |
| Privileges | Administrator privileges to install |



MORE OPTIONS TO CONNECT

Sirius coding and marking software allows users to easily connect to Squid Ink's Viper™ TJ industrial printing system and create and edit message files from the Viper touchscreen or Windows® PC. The WYSIWYG message creation platform provides the functionality and versatility that today's coding and marking applications require.



| SOFTWARE REQUIREMENTS | |
|--------------------------|-----------------------------------------------------|
| Operating System | Windows® 7 |
| Memory | 512 MB |
| Hard Disk Space | 50 MB (256 MB if Adobe Acrobat® is also installed) |
| Video | 4 MB, Windows® XP compatible SVGA |
| Resolution | 800 x 600 |
| Color Depth | 16-Bit recommended |
| Ethernet Port | IEEE 802.3 10BASE-T, 10 Mbps min, RJ-45 |
| Firewall / Printer Ports | 21 (FTP) connections and Ports 10200, 10300 & 10400 |
| Privileges | Administrator privileges to install |

PRIMARY PRODUCT MARKING SYSTEMS

Jetstream™



CJ SMALL CHARACTER CODER

The JetStream offers users the latest in today's technology. The system's simple to use 10.1" color touchscreen interface features a number of options to help users make their mark on a variety of substrates including porous, non-porous, smooth, textured, curved, concave, and more.

CE

| SYSTEM SPECIFICATIONS | |
|-----------------------|---------------------------------------------------------------------------------------|
| Printhead Technology | Continuous Ink Jet |
| Nozzle Size | 60µm nozzle standard |
| Print Speed | Up to 1,000 ft/min (305m/min) 5x5 single line |
| Max Print Lines | 5 lines @ 5x5 font, 4 lines @ 7x5 matrix |
| Font Matrix Config. | 5x5, 7x5, 9x7, 12x12, 16x16, 24x24, 32x32 |
| Character Height | 0.07" - 0.59" (1.8mm - 15mm) |
| Throw Distance | Up to 1.2" (30mm) from printhead |
| Touchscreen/Display | 1280x800, 10.1" LCD touchscreen |
| Software Features | Bar codes, graphics, counter, lot counter, shift code, time and date, expiration date |
| CleanJet™ | Quick & easy one button auto cleaning |

Jetstream™ SONIC



RELIABLE CHARACTER CODER

The JetStream Sonic CJ printer operates at 94kHz. With higher kHz operating frequency, there are more droplets that are available each second of print – 94,000. The increased droplet availability translates to an almost 20% higher print speed capability.

CE

| SYSTEM SPECIFICATIONS | |
|-----------------------|---------------------------------------------------------------------------------------|
| Printhead Technology | Continuous Ink Jet |
| Nozzle Size | 60µm nozzle standard |
| Print Speed | Up to 1,000 ft/min (305m/min) 5x5 single line |
| Max Print Lines | 5 lines @ 5x5 font, 4 lines @ 7x5 matrix |
| Font Matrix Config. | 5x5, 7x5, 9x7, 12x12, 16x16, 24x24, 32x32 |
| Character Height | 0.07" - 0.59" (1.8mm - 15mm) |
| Throw Distance | Up to 1.2" (30mm) from printhead |
| Touchscreen/Display | 1280x800, 10.1" LCD touchscreen |
| Software Features | Bar codes, graphics, counter, lot counter, shift code, time and date, expiration date |
| CleanJet™ | Quick & easy one button auto cleaning |

Streamline 5™



CJ SMALL CHARACTER CODER

The Streamline 5 is designed to print superior quality small characters on a variety of substrates. Printing up to 5 lines of text, the Streamline offers a reliable, yet cost effective solution for virtually any small character, primary package coding application.

WiFi Windows CE

| SYSTEM SPECIFICATIONS | |
|-----------------------|-------------------------------------------|
| Printhead Technology | Continuous Ink Jet |
| Nozzle Size | 70µm standard, 60µm & 50µm optional |
| Print Speed | Up to 1,000 ft/min (305m/min) 5x5 matrix |
| Max Print Lines | 5 lines @ 5x5 font, 4 lines @ 7x5 matrix |
| Font Matrix Config. | 5x5, 7x5, 9x7, 12x12, 16x16, 24x24, 32x32 |
| Character Height | 0.07" - 0.59" (1.8mm - 15mm) |
| Throw Distance | Up to 1.2" (30mm) from printhead |
| Touchscreen/Display | Revolutionary wi-fi tablet HMI |
| Software Features | Counter, lot, shift code, time & date |
| CleanJet™ | Quick & easy one button auto cleaning |

SQ-LASER



LASER CODING SYSTEMS

Squid Ink's laser coding systems are designed for high speed food and beverage, pharmaceutical, cosmetic, and other primary coding applications. Squid Ink lasers can permanently mark onto paper, cardboard, plastic, glass, wood, coated metal, leather, and more.

CE

| SYSTEM SPECIFICATIONS | |
|-----------------------|--------------------------------------------------------------------------|
| Printhead Technology | CO2 and Fiber laser systems |
| Laser Wavelength | CO2: 9.3 µm or 10.6µm Fiber: 1.064 µm |
| Laser Galvanometer | 2D high-speed scanning galvanometers |
| Cooling Method | Atmospheric air-cooled |
| Power Consumption | 500W-1000W (110VAC, 60Hz) |
| Marking Focal Length | CO2: 100mm - 190mm Fiber: 100mm - 305mm |
| Positioning Accuracy | 0.01mm |
| Marking Area | CO2: 50mm x 50mm - 175mm x 175mm Fiber: 100mm x 100mm - 205mm x 205mm |
| Assembly Line Speed | <120m/min |
| Marking Speed | 800 - 1000 characters/second |

UV CURING SYSTEM

SQUID UV
LED Curing System



UV LED CURING SYSTEM

The Squid UV LED Curing System from Squid Ink offers accurate and consistent UV curing across a variety of commercial and industrial applications. Whether you need to cure ink on metal, glass, automotive products, plastics, electronics and more, you're sure to find the right solution.

| SYSTEM SPECIFICATIONS | |
|--------------------------|--------------------------------------------------------------|
| Illumination Area | Single Head 20mm x 80mm Dual Head 40mm x 80mm or 20 x 160 |
| Wave Length | 395 ± 5nm |
| Irradiance | 12W/cm² |
| Illumination Height | 1.5 - 10mm from substrate |
| Production Line Dry Time | Up to 35m/min depending on substrate |
| Control Modes | Manual or automatic |
| Output Control | 10% - 100% |
| Power Supply | 90 - 220V AC 50/60Hz 300W |
| LED Lifetime | 20,000 hours or more |

THERMAL INKJET PRINTING

VIPER



HI-QUALITY PRODUCT CODING

Viper TJ utilizes industry leading Fural® no-mess ink cartridges to print up to 600 dpi hi-resolution codes that dry in seconds on a variety of surfaces. Viper is ideal for marking coated and non-coated stocks, plastic, polystyrene, films, foils, metals, glass, and several other porous or non-porous substrates.

Windows CE

| SYSTEM SPECIFICATIONS | |
|---------------------------|-------------------------------------------------------------------------------------------------------|
| Printhead Technology | Thermal inkjet technology from Fural |
| Max Print Height | 0.5" (12.7mm) per printhead |
| Vertical Print Resolution | 300 or 600 dpi capable of printing razorsharp graphics, small character text, and scannable bar codes |
| Print Speed | Up to 197 fpm (60 m/min) @ 300 dpi standard; up to 787 fpm (240 m/min) at 300 dpi optional |
| Substrate Capabilities | Porous or non-porous surfaces |
| SOFTWARE SPECIFICATIONS | |
| Time & Date | Full time & date, expiration & Julian |
| Shift Codes | Programmable shift codes with automatic rollover |
| Bar Codes | All standard 1D bar codes included; 2D bar codes require optional Pro software upgrade |
| Logos | Most image files supported with Sirius software |
| Printing Features | Reverse, invert, rotate, repeat, on/off button |

PRODUCT & CASE HANDLING

VERTICAL CASE TRANSPORT VCTS



CUSTOM CASE PRINTING MADE EASY

The VCTS is designed for off-line custom case printing and eliminates the need for pre-printed cases or expensive labeling equipment.

| VCTS SPECIFICATIONS | |
|-------------------------|-------------------------------------------------------|
| Machinery Makeup | 12 gauge powder coated steel |
| Belt Speed | 72 feet/minute |
| Input Hopper | Up to 90 flat single wall cases |
| Input Hopper Width | 10" - 33" (Standard) 10" - 48" (VCTS-XL) (SXLXL) |
| Minimum Box Size | 10.0" (Standard & VCTS-XL) |
| Maximum Box Size | 33.0" (Standard) 48" (VCTS-XL) |
| Programmable Counter | Batch, rate, & elapsed counting counting |
| Printing Systems | Designed for ink jet printing systems printing system |
| Electrical Requirements | 110 VAC, 60Hz, 4.0A |
| Air Requirements | 80 PSI, 1/4" NPT fitting |

BOTTOMLESS SIDE BELT TRANSFER CONVEYOR GLOBALTEK™



PRIMARY CODING AND MARKING TRANSPORT

The GLOBALTEK™ Bottomless Conveyor has variable speeds and is used in moving containers a short distance from one working/transportation conveyor to another and designed for open access to the bottom side of the container for coding expiration dates, lot numbers, etc.

| CONVEYOR SPECIFICATIONS | |
|-------------------------|---------------------------------------------|
| Machinery Makeup | Bodine® AC Motors, 1/6 hp, 94 rpm, 39 lb/in |
| Electrical Requirements | 115 volts / 1 ph / 60 hz |
| Adjustable Belt Opening | 0" to 8" |
| Belt Size | 36" L x 1" H |
| Floor to Belt Height | Adjustable from 35 1/2" to 42" |
| Machine Dimensions | 38" L x 24 1/2" W x 44" H |

WORLD CLASS PRINTING SYSTEMS FOR REAL WORLD APPLICATIONS

Squid Ink is a leading manufacturer of coding and marking systems for product identification and traceability, providing superior quality inks and low maintenance printing equipment.

Squid Ink printing systems include a full line of Hi-Resolution, Continuous Ink Jet (CIJ), Thermal Ink Jet (TIJ), Large Character, UV LED, and Laser marking systems. Our printers and ink are designed to print the highest quality bar codes, batch numbers, date codes, logos and large or small character text, directly onto corrugated cases, plastics, metals, glass, wood and other substrates.



Squid Ink - headquartered in Brooklyn Park, Minnesota - is a single source supplier of all of your Coding and Marking needs.

For more information visit
www.squidink.com
or contact us at 1 (800) 877-5658
or email us at info@squidink.com

VARIABLE SPEED CONVEYORS



CONVENIENT PRODUCT TRANSPORT

Small footprint, seamless self-tracking belt, pre-drilled holes for printer hardware, and magnetic mounted control box make the Eastey Conveyor Series an ideal solution for case coding and product transport.

| CONVEYOR SPECIFICATIONS | |
|-------------------------|--------------------------------------|
| Machinery Makeup | 12 gauge powder coated steel |
| Variable Speed | Up to 100 fpm |
| Conveyor Height | 20"-33.5" w/o casters 24"-37.5" with |
| Conveyor Width | 12", 18" and 24" |
| Conveyor Length | 4' or 6' |
| Electrical Requirements | 110V 5A Single Phase |

STAINLESS STEEL INLINE CONVEYOR GLOBALTEK™



RELIABLE INLINE PRODUCT TRANSPORT

GLOBALTEK™ offers a variety of inline conveyor systems that can be configured specifically for your floor plan. All conveyors feature 304 stainless steel construction, a made in the USA Bodine® motor and variable speed control. Inline conveyors are used to move containers a specific distance in a production line.

| CONVEYOR SPECIFICATIONS | |
|-------------------------|------------------------------------------------------|
| Machinery Makeup | Bodine DC Motor, 3/8 hp, 83 rpm, 248 lb/in |
| Electrical Requirements | 115 volts / 1 ph / 60 hz |
| Belt Type | Low friction acetal (Delrin®) table top plastic belt |
| Belt Widths | 4.5" or 7.5" |
| Belt Length | 72" |
| Floor to Belt Height | Adjustable from 35" to 40" |

INK JET FLUIDS

REPLACEMENT INKS & FLUIDS



COMPLETE LINE OF REPLACEMENT INKS & FLUIDS

When it comes to ink jet printing, you can rely on Squid Ink to offer a better solution—the right solution—with our complete line of replacement coding and marking fluids.

| INKS & REPLACEMENT FLUIDS BY OEM | |
|----------------------------------|------------------|
| Alpha-Dot® | Hitachi® |
| Citronix® | Ilmak® |
| Diagraph® | Imaje® |
| Domino® | Independent Ink® |
| Fasco® | Inkjet Inc.® |
| Foxjet® | Linx® |
| HS Automatic® | Loveshaw® |
| Marsh® | Matthews® |
| Sauven® | Trident® |
| Videojet® | Willett® |
| Zanasi® | |





©2021 Squid Ink Manufacturing, Inc. CoPilot®, Streamline®, Orion® PC Software, Viper™, Sirius™, Jetstream™, and SquidCheck® are trademarks of Engage Technologies Corporation. Windows® is a registered trademark of Microsoft Corporation in the United States and other countries. All other trademarks are the property of their respective owners. Specifications subject to change.



7041 Boone Avenue N., Brooklyn Park, MN 55428
 1 (800) 877-5658 www.squidink.com
info@squidink.com



ENGAGE *technologies corporation*