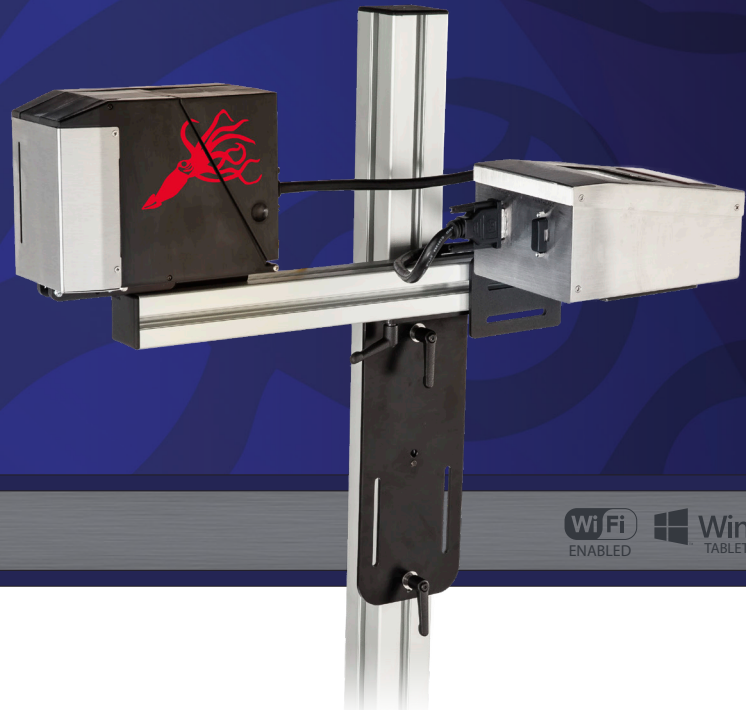




**World Class Printing Systems  
for Real World Applications**



## COPILOT MAX TURBO

### **BIGGER PRINT, BETTER PRINT**

Squid Ink's CoPilot® Max Turbo printing system is designed to print superior quality hi-resolution characters on porous or non-porous surfaces. For applications that require immediate dry times on non-porous surfaces, the CoPilot Max Turbo also has the capability to run UV LED curable inks. With up to 2.8" of print height per printhead and the ability to run up to 2 printheads from one controller, the CoPilot Max Turbo offers a versatile, yet cost effective solution for your coding and marking applications.

### **USER FRIENDLY DESIGN**

CoPilot Max Turbo features a 4.3" full color touchscreen that allows users to access to the system's internal messages and print functions. Messages are created and edited on Squid Ink's easy-to-use Orion™ PC Software and transferred via USB, ethernet, wireless, or optional Windows® tablet. The tablet is ideal for users who want message creation and editing functionality on the production floor. For larger applications, an unlimited number of CoPilot Max Turbo printing systems can be connected via ethernet or wireless network and controlled through one central Orion PC.

### **MAKE YOUR MARK**

CoPilot Max Turbo utilizes Squid Ink's revolutionary active ink system, allowing users the ability to tilt or rotate the printhead in any direction without making height adjustments to the ink supply. The system prints hi-resolution characters, razor-sharp text, scannable bar codes and great looking logos at up to 360 dpi, nearly twice the resolution of competitive printers in its class.

### **INCREASED PERFORMANCE**

The CoPilot Max Turbo controller features increased processing power to print the messages you want, when you want to print them. Faster GUI response time and near immediate message rendering times allow the CoPilot Max Turbo to keep up with demands of your fast-paced manufacturing environment.

### **SEAMLESS INTEGRATION**

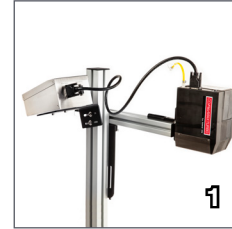
The CoPilot Max Turbo is designed to meet the harsh demands of your applications. The printer features a durable touchscreen, industrial strength printhead construction, and simple active ink delivery. You can be confident that CoPilot Max Turbo's rugged design will withstand the most abusive industrial environments while providing superior quality print. The CoPilot Max Turbo also features a large 500ml snap-in cartridge, allowing users the ability to swap ink cartridges in a matter of seconds. The generous ink volume, quick-change ink cartridge, and user-friendly touchscreen design allows users to keep their line running, reducing downtime and maximizing ROI.

### **AFFORDABLE PRODUCT CODING**

The CoPilot Max Turbo lets users meet the GS1 barcode specification for less. CoPilot Max consumable costs are typically 1/10 of the cost of paper labels, and eliminate pre-printed cartons and SKUs of label inventory. Any way you look at it, Squid Ink's CoPilot Max provides users with an affordable solution to meet their ink jet coding needs.

### **THE RIGHT SOLUTION**

Rugged design. Low maintenance operation. User friendly software. Low cost of ownership. Your benefits go on and on. When it comes to industrial ink jet printing, rely on Squid Ink to provide the right solution for your coding and marking needs.



**1)** CoPilot Max Turbo's revolutionary active ink system allows conversion to downshooter mode in seconds.

**2)** Squid Ink's proven inks and fluids are available in large 500ml no-mess cartridges.

**3)** The CoPilot Max Turbo utilizes oil-based, solvent-based, or UV curable inks for printing on a wide range of porous or non-porous substrates.

**4)** A 4.3" full color touchscreen provides access to the system's internal messages and print functions.

## SYSTEM SPECIFICATIONS:

- **Print Technology** - Piezo impulse printhead technology
- **Maximum Print Height** - 2.8" (7.1 cm) per printhead
- **Vertical Print Resolution** - 360 dpi capable of printing razor-sharp graphics, small character text, and scannable bar codes
- **Horizontal Print Resolution** - 150 dpi or 300 dpi
- **Print Speed** - Up to 220 ft/min at 150 dpi; Up to 110 ft/min at 300 dpi
- **Time & Date** - Internal real time clock with battery back-up
- **Product Sensor** - External photocell or optional encoder
- **Communication Interface** - One USB host and one Ethernet input
- **Touchscreen** - 4.3" (10.9 cm) full color touchscreen display
- **Ink Cartridge Volume** - 500ml cartridge
- **Low Ink Indicator** - Status alert on touchscreen, light beacon optional
- **Substrate Capabilities** - Porous or non-porous surfaces
- **Electrical Requirements** - 100 - 240 VAC, 50/60 Hz, 65W max
- **Operating Environment** - 34°F - 104°F (1° - 40°C)
- **Agency Certifications** - CE

## OPTIONAL ACCESSORIES

- **Encoder** - For operation with variable speed conveyors
- **Bar Code Laser Scanner** - Allows scan and print message retrieval
- **External Light Beacon** - Indicates low ink levels
- **Wireless USB Device and Router** - For wireless connectivity
- **Windows Tablet** - Pre-loaded with Orion™ software; includes mounting bracket with swivel arm, USB to ethernet cable and stylus
- **Conveyor Mounting Bracket** - Provides stable mount to conveyor or other material handling equipment
- **Floorstand** - Includes mounting brackets and legs with leveling feet; 59" (1.5m) total height
- **Spring Loaded Printhead Bracket** - Provides consistent throw distance with inconsistent boxes or products
- **Starter Kit** - Includes ink, cleaner and flush solution, printhead wipes, hand cleaner and latex gloves

## SOFTWARE SPECIFICATIONS

- **Time & Date** - Full time and date functionality including expiration date and Julian Dates.
- **Item Numbering** - Sixteen counters, one of which can be a daily counter and production counter
- **Shift Codes** - Four programmable shift codes with automatic rollover
- **Bar Codes** - All standard bar codes including 2D
- **Fonts** - Arial, Arial Bold, Arial International, Arial Monospaced, Courier, Tahoma Bold and Lucida resident fonts for use in variable data elements. Static elements in any Windows® font
- **Logos** - Most image files supported with Orion software
- **Printing Features** - Reverse, invert, rotate, repeat; print on/off button
- **Message Length** - Up to 42" (1.07 m)
- **Number of Messages** - 1GB storage space will store approximately 1000+ messages
- **Ink Usage** - Shown in Orion software
- **User Data Prompts** - Prompts for user input at start of print job by manual input on touchscreen
- **Wireless Connectivity** - For wireless connection between PC or tablet and printer controller
- **Database Capability** - Ethernet communication protocol for external communication
- **Languages** - English, Spanish, German, Chinese, Japanese, Korean, Russian, Polish



©2023 Squid Ink Manufacturing, Inc. Specifications subject to change. All trademarks are the property of their registered owners. Windows™ is a registered trademark of Microsoft Corporation in the United States and other countries.



7041 Boone Avenue North, Brooklyn Park, MN 55428  
 (763) 795-8856  
 www.squidink.com

1 (800) 877-5658  
 info@squidink.com



ENGAGE technologies corporation